



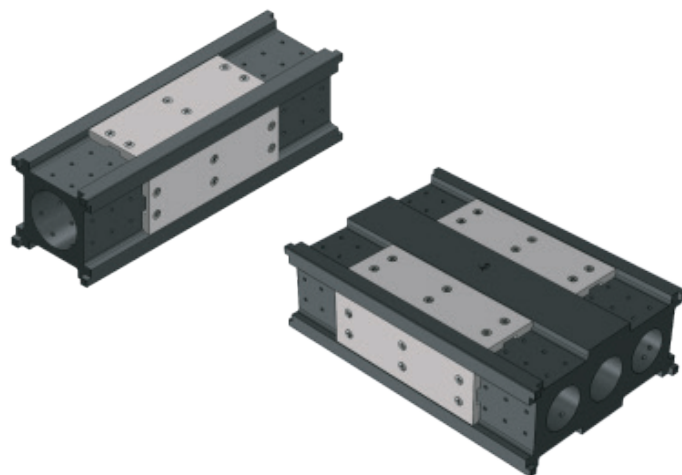
# MASS SIMULATORS

Redwire's mass simulators are custom and tunable payload surrogates used for testing, integration operations, and can also be used as flight surrogates in the event the actual satellite is not available for launch.

## PARAMETERS

### + 3U and 6U CubeSat mass simulators

- Modular design
- Tunable mass and CG
- Flight qualified
- CubeSat XL and tabbed/CSD versions

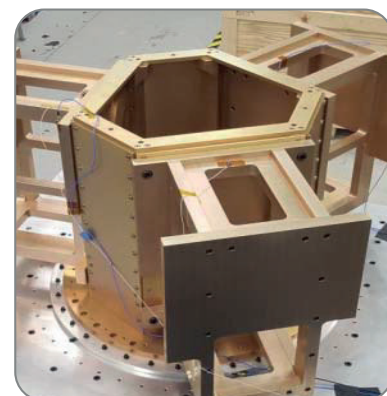
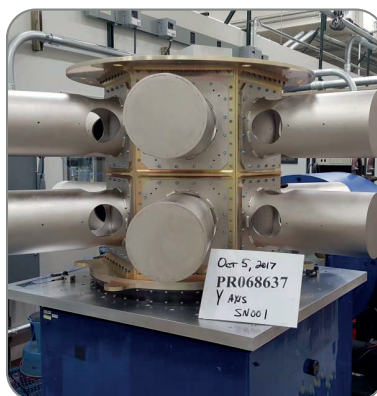


### + Custom mass simulators

- Point design
- Tunable for unique payloads/dispensers

## MISSION HERITAGE

- + Spaceflight SSO-A mission
- + Parsons
- + MIT Lincoln Labs



REDWIRESPACE.COM | @REDWIRESPACE | SALES@REDWIRESPACE.COM



Copyright 02/2021 Redwire Corporation. Redwire reserves the right to make changes without further notice to any products herein. Redwire makes no warranty, representation or guarantee regarding the suitability of its products for any particular purpose, nor does Redwire assume any liability arising out of the application or use of any product or circuit, and specifically disclaims any and all liability, including without limitation special, consequential, or incidental damages. "Typical" parameters, including "Typicals" must be validated for each customer application by customer's technical experts. Redwire does not convey any license under its patent rights nor the rights of others. Redwire products are not designed, intended, or authorized for use as components in systems or any other application in which the failure of the Redwire product could create a situation where personal injury or death may occur. Should Buyer purchase or use Redwire products for any such intended or unauthorized application, Buyer shall indemnify and hold Redwire and its officers, employees, subsidiaries, affiliates, and distributors harmless against all claims, costs, damages, and expenses, and reasonable attorney fees arising out of, directly or indirectly, any claim of personal injury or death associated with such intended or unauthorized use, even if such claim alleges that Redwire was negligent regarding the design or manufacture of the part. Redwire is an Equal Opportunity/Affirmative Action Employer. This literature is subject to all applicable copyright laws and is not resale in any manner.